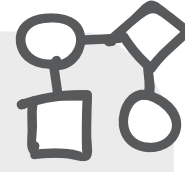


The European Network of Open Data Labs



What are ODLs?

Open Data Labs are inclusive innovation hubs that connect differently talented citizens, IT-experts, hackers, makers, public authorities and entrepreneurs. They support flexible data intermediaries that promote, enable and generate social value with open data!



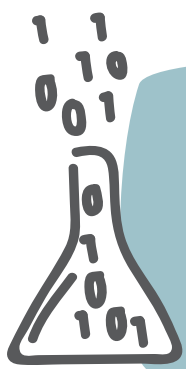
How does an ODL work?

Through the ODL, people gain access to an experimental space of tools, know-how, activities, hackathons and training. An ODL is a participatory eco-system for co-creating a new generation of public services. Everyone will be able to work with data according to their experience and knowledge: it will be possible to visualise data, to experiment or to develop new ideas from more expert citizens.



What is our vision?

Starting from the Open4Citizens pilots in Barcelona, Karlstad, Milan, Copenhagen & Rotterdam, we invite other labs to join this network. Together, we can use data to develop ideas into real services. We bridge local communities around OpenDataLabs with an European Network. Open is the standard, as we promote data as a common asset in community building that supports local initiatives.



“A catalyst to open data as a shared resource for innovation”

We share...



Citizen data toolkit



Knowledge



Collaboration tools



Incubation



Resources



Connections

Join us!

Join us by signing the Letter of Intent if you are interested in sharing existing know-how on open data, hackathons and urban social innovation. The European Network of OpenDataLabs is a not-for-profit organisation with minimal membership fees. Together, we form the core of the network and promote an experimental European environment for doing, dreaming and making meaningful use of data!

Find the Letter of Intent at:
www.open4citizens.eu

Sign it and send to: Nicola Morelli, Professor with Specific Responsibilities: nmor@create.aau.dk

